

catit®

— CUISINE —
NATURALLY TASTY



Introducing our new range of gourmet wet foods using real meat or fish, freshly prepared into traditional dishes to satisfy your feline's refined palate. Serve your cat a delicious Mousse, Pâté or Stew with ease, thanks to our easy-open Tetra packs.

Catit Cuisine wet foods are wholesome, hearty and as good as if you'd prepared them at home! We use natural ingredients only, gently cooked to preserve their nutrients and exquisite taste.



Catit Cuisine – Pâté
Complete food for cats
of all lifestages

**Nutritionally complete pâté,
freshly prepared using
real meat**

Beautifully rustic and flavourful, Catit Cuisine Pâté offers your cat complete nutrition rich in real meat with wholesome mixed-in veggies. To satisfy your feline's refined palate, Catit Cuisine Pâté uses natural ingredients only, gently cooked to preserve their original nutrients and taste.



NO grains, soy, or gluten



NO artificial preservatives,
flavouring or colouring



NO added sugars



High meat content

Catit Cuisine Pâté comes in easy-open Tetra Recart packagings that you can conveniently reseal. They're made of 70% renewable FSC-certified paperboard, are recyclable, and take up much less space and energy to produce than other forms of packaging.

catit[®]

Catit Cuisine Chicken Pâté with Liver

- **Real chicken meat**, natural human-grade chicken, rich in highly digestible protein
- **Nutritious liver**, irresistible in flavour and absolutely packed with essential proteins, important vitamins and minerals, that will have your cat coming back for more

Composition: Chicken (60%, of which Liver 20%), Minerals. **Analytical Constituents:** Crude Protein 10.3%, Crude Fat 5.9%, Crude Fibre 0.7%, Crude Ash 2.5%, Moisture 79.8%. **Additives: Nutritional additives (per kg):** Copper (II) sulphate pentahydrate 0.13mg, Iron (II) carbonate (siderite) 0.51mg, Manganese (II) oxide 0.32mg, Zinc oxide 1.61mg, Potassium iodide 0.06mg.

Feeding guide: For an average 3.5kg cat we suggest feeding 2½ to 3 cartons per day in at least 2 meals. Fresh drinking water should be available.



Catit Cuisine Chicken Pâté with Liver

95g #42134

UPC 0-22517-42134-5
SRT 12 (Configuration of 2x6)



0 22517 42134 5



catit®
CATIT.COM

Catit Cuisine

Beef Pâté with Carrots

- **Real beef and liver**, a great source of protein and vitamins
- **Real chicken meat**, rich in highly digestible protein
- **Carrots**, offering potassium, calcium, and iron to help support your cat's immune system
- **Pumpkin**, delicious and dense in dietary fibre to aid your cat's digestive system

Composition: Beef (35%, of which Liver 5%), Chicken, Carrots (4%), Pumpkin (2%), Minerals. **Analytical Constituents:** Crude Protein 10.1%, Crude Fat 3.9%, Crude Fibre 0.9%, Crude Ash 2.8%, Moisture 81.4%. **Additives: Nutritional additives (per kg):** Copper (II) sulphate pentahydrate 0.22mg, Iron (II) carbonate (siderite) 0.88mg, Manganese (II) oxide 0.55mg, Zinc oxide 2.75mg, Potassium iodide 0.11mg, Vitamin A 1320 IU.

Feeding guide: For an average 3.5kg cat we suggest feeding 3 to 3½ cartons per day in at least 2 meals. Fresh drinking water should be available.



Catit Cuisine
Beef Pâté
with Carrots
90g #42135

UPC 0-22517-42135-2
SRT 12 (Configuration of 2x6)



catit
CATIT.COM

Catit Cuisine

Tuna Pâté with Sardines

- **Tuna**, a long-time feline favorite, rich in protein and including omega-3 fatty acids
- **Sardines**, natural source of minerals like calcium, iron, and copper, for your cat's overall health
- **Peas & Carrots**, delectable pair of nourishing veggies including good protein and fibre
- **Salmon and olive oil**, excellent source of omega-3 & 6 fatty acids, keeping your cat's coat nice and healthy

Composition: Tuna (26%), Sardine (24%), Carrots (4%), Peas (4%), Salmon Oil, Olive Oil, Minerals. **Analytical Constituents:** Crude Protein 11.3%, Crude Fat 3.8%, Crude Fibre 1.1%, Crude Ash 1.4%, Moisture 81.5%. **Additives: Nutritional additives (per kg):** Copper (II) sulphate pentahydrate 0.82mg, Iron (II) carbonate (siderite) 3.23mg, Manganese (II) oxide 2.04mg, Zinc oxide 10.14mg, Potassium iodide 0.40mg.

Feeding guide: For an average 3.5kg cat we suggest feeding 3 to 3½ cartons per day in at least 2 meals. Fresh drinking water should be available.



Catit Cuisine
Tuna Pâté
with Sardines
95g #42136

UPC 0-22517-42136-9
SRT 12 (Configuration of 2x6)



0 22517 42136 9



catit
CATIT.COM

Catit Cuisine

Turkey Pâté with Chicken & Ham

- **Delicious Turkey meat**, real muscle tissue packed with highly digestible protein
- **Chicken liver**, excellent source of protein, vitamins and amino acids
- **Ham**, non-seasoned, contributes to your cat's healthy skin and coat
- **Seaweed**, a known Superfood offering your cat a prebiotic boost aiding digestion and immune system

Composition: Turkey (40%), Chicken Liver (15%), Ham (4%), Seaweed. **Analytical Constituents:** Crude Protein 9.8%, Crude Fat 10.2%, Crude Fibre 0.7%, Crude Ash 2.8%, Moisture 75.8%. **Additives:** **Nutritional additives (per kg):** Copper (II) sulphate pentahydrate 0.32mg, Iron (II) carbonate (siderite) 1.27mg, Manganese (II) oxide 0.80mg, Zinc oxide 3.97mg, Potassium iodide 0.16mg, Vitamin A 2760 IU. Storage

Feeding guide: For an average 3.5kg cat we suggest feeding 2 to 2½ cartons per day in at least 2 meals. Fresh drinking water should be available.



Catit Cuisine
Turkey Pâté
with Chicken & Ham
95g #42137

UPC 0-22517-42137-6
SRT 12 (Configuration of 2x6)



catit.
CATIT.COM



Catit Cuisine - Stew
Complementary food for felines
of all ages

**Classic, hearty stew,
the ideal hydrating dish
for your cat**

Our nourishing stews are the perfect hydrating supplement to your cat's kibble. Catit Cuisine Stew is loaded with tender chunks of real meat and veggies, making it an instant favorite with cats. As your cat always comes first, Catit Cuisine Stew is completely natural, gently cooked to preserve more of the nutrients and rich flavour.



NO grains, soy, or gluten



NO artificial preservatives,
flavouring or colouring



NO added sugars



High meat content

Catit Cuisine Stew comes in recyclable Tetra Recart packs that are easy to open, reseal, and store. The Tetra Recart are made of FSC-certified paperboard that's 70% renewable, and take less energy to produce than other types of packaging.

catit[®]

Catit Cuisine Chicken Stew with Pumpkin

- **Real succulent chicken** — quality meat cuts for your cat to devour, rich in highly digestible protein
- **Peas**, benefitting your cat with a great variety of nutrients including potassium, sodium, zinc, manganese, magnesium, calcium, vitamin C, B6, D, and Iron.
- **Carrots**, offer a lot of nutrition with few calories, ranging from vitamin K1, B6, to potassium and more.
- **Pumpkin**, packs a ton of fibre — great for your cat's healthy digestion, and may have them feel satiated for longer

Composition: Chicken (30%), Peas (4%), Carrots (4%), Pumpkin (4%). **Analytical Constituents:** Crude Protein 5.7%, Crude Fat 1.7%, Crude Fibre 0.9%, Crude Ash 0.4%, Moisture 90.9%.



Catit Cuisine
Chicken Stew
with Pumpkin
95g #42144

UPC 0-22517-42144-4
SRT 12 (Configuration of 2x6)



catit.
CATIT.COM

Catit Cuisine

Stew with Seafood and Pumpkin

- **Real tuna**, savory low-carb, high-protein fish cuts your cat will adore
- **Mussels**, excellent seafood protein source, also including essential vitamins and minerals
- **Shrimp**, containing omega-3 and 6 fatty acids, antioxidants, and choline.
- **Pumpkin**, to aid your cat's immune system, help support their eyesight, and promote a healthy skin and coat
- **Peas and Carrots**, a duo of fresh, healthy veggies abundant in protein and fibre respectively

Composition: Tuna (10%), Mussels (4%), Shrimp (4%), Pumpkin (4%), Carrots (4%), Peas (4%). **Analytical Constituents:** Crude Protein 4.1%, Crude Fat 0.5%, Crude Fibre 0.9%, Crude Ash 0.5%, Moisture 92.9%.



Catit Cuisine Stew with Seafood and Pumpkin

95g #42145

UPC 0-22517-42145-1
SRT 12 (Configuration of 2x6)



catit®
CATIT.COM

Catit Cuisine

Beef Stew with Veggies

- **Real beef**, tender beef cuts rich in high-quality protein. The little specks of fat indicate this is real premium beef.
- **Peas**, packing more protein, fibre, and an appealing taste your cat will love
- **Carrots**, natural source of fibre and various vitamins in support of your cat's healthy life

Composition: Beef (30%), Peas (2%), Carrots (2%). **Analytical Constituents:** Crude Protein 5.8%, Crude Fat 3.9%, Crude Fibre 0.7%, Crude Ash 0.4%, Moisture 88%.



Catit Cuisine
Beef Stew
with Veggies
95g #42146

UPC 0-22517-42146-8
SRT 12 (Configuration of 2x6)



catit.
CATIT.COM

Catit Cuisine

Stew with Chicken and Tuna

- **Real tuna**, a true delicacy for your cat to enjoy, packed with protein and Omega-3 fatty acids
- **Real chicken**, delicious meat cuts with highly digestible animal protein for your feline carnivore
- **Peas**, healthy source of protein and a host of other beneficial nutrients; potassium, sodium, zinc, manganese, calcium, iron, vitamin C, B6, and D.
- **Carrots**, bite-sized pieces packed with vitamins and minerals, cooked tender

Composition: Tuna (15%), Chicken (15%), Peas (4%), Carrots (4%). **Analytical Constituents:** Crude Protein 6.7%, Crude Fat 0.9%, Crude Fibre 0.9%, Crude Ash 0.6%, Moisture 89.6%.



Catit Cuisine Stew with Chicken and Tuna

95g #42147

UPC 0-22517-42147-5
SRT 12 (Configuration of 2x6)



catit®
CATIT.COM



Catit Cuisine – Mousse
Complete food to please
any cat or kitten

Smooth mousse made of real meat, as complete nutrition for your feline

Delightfully smooth and rich in flavour, Catit Cuisine Mousse is a complete & balanced meal that your cat will look forward to each day. Catit Cuisine Mousse is a natural dish packed with tasty fish or succulent chicken, so soft in texture that even kittens and senior cats can easily enjoy its goodness.

Our mousse is gently cooked to preserve the original nutrients and taste.



NO grains, soy, or gluten



NO artificial preservatives,
flavouring or colouring



NO added sugars



High meat content

Catit Cuisine Mousse comes in adorable Tetra Recart packaging that are simple to open, reseal and store. Tetra Recart uses 70% renewable FSC-certified paperboard, they are recyclable, and don't take as much space or energy to create than other packaging formats.

catit[®]

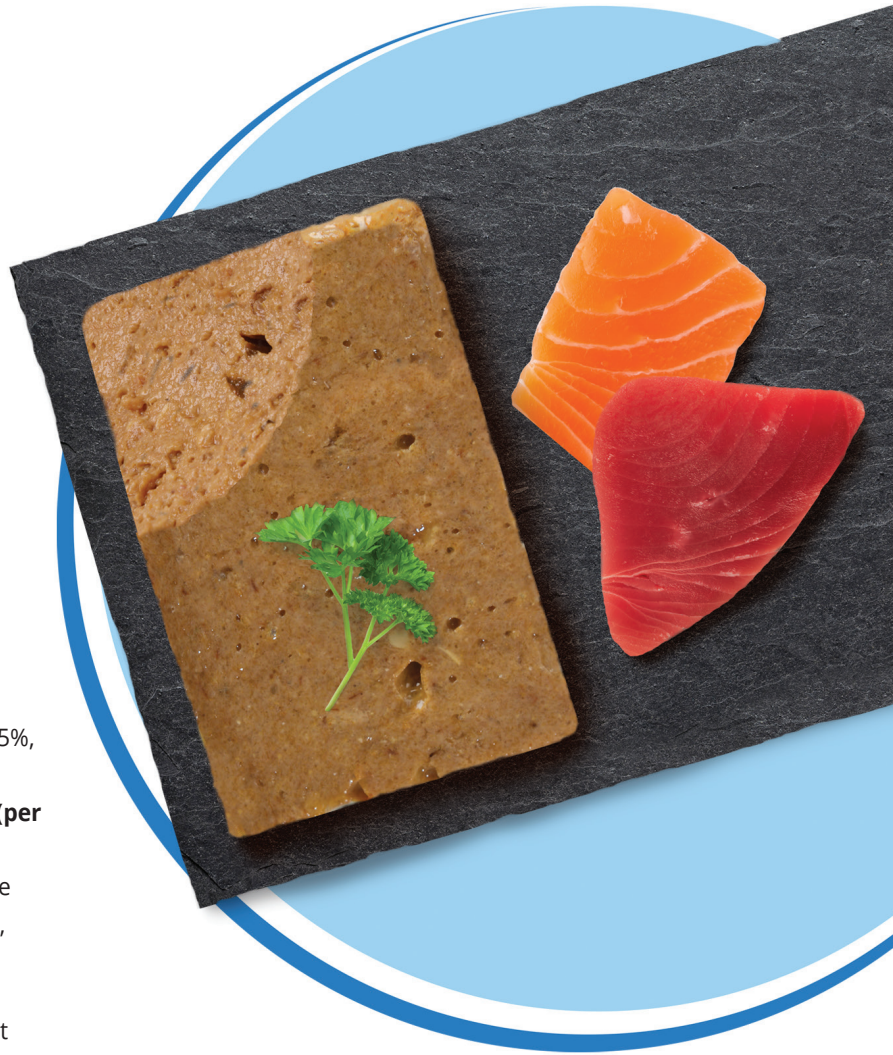
Catit Cuisine

Ocean Fish Mousse with Tuna & Salmon

- **White Fish** — Freshly prepared fish, rich in high-quality protein
- **Chicken**, delicious real muscle meat for your feline's dining pleasure
- **Tuna**, irresistibly rich in flavour, yet equally beneficial in protein, vitamins and minerals
- **Salmon & Salmon Oil**, source of protein and omega fatty acids to help your cat maintain their lustrous silky coat

Composition: White Fish (26%), Chicken, Tuna (4%) Salmon (4%) Salmon Oil, Minerals, Hydrolysed Fish Protein. **Analytical Constituents:** Crude Protein 8.5%, Crude Fat 5.8%, Crude Fibre 1.1%, Crude Ash 2.8%, Moisture 80.7%. **Additives: Nutritional additives (per kg):** Copper (II) sulphate pentahydrate 2.43mg, Iron (II) carbonate (siderite) 9.57mg, Manganese (II) oxide 6.04mg, Zinc oxide 30mg, Potassium iodide 1.18mg, Vitamin A 1320 IU.

Feeding guide: For an average 3.5kg cat we suggest feeding 2½ to 3½ cartons per day in at least 2 meals. Fresh drinking water should be available.



Catit Cuisine
Ocean Fish Mousse
with Tuna & Salmon
90g #42140

UPC 0-22517-42140-6
SRT 12 (Configuration of 2x6)



catit
CATIT.COM

Catit Cuisine

Chicken Mousse with Ham

- **Chicken**, human-grade chicken meat offering your cat highly digestible protein
- **Chicken Liver**, nutritious source of essential proteins, vitamins and minerals
- **Ham**, non-seasoned meat with beneficial nutrients like selenium and potassium
- **Olive oil**, helps support your cat's healthy skin and coat, and eases the transition of hairballs

Composition: Chicken (36% of -which Liver 10%), Ham (4%), Olive Oil, Minerals. **Analytical Constituents:** Crude Protein 6.9%, Crude Fat 7.4%, Crude Fibre 1%, Crude Ash 2.5%, Moisture 81.5%. **Additives: Nutritional additives (per kg):** Copper (II) sulphate pentahydrate 0.86mg, Iron (II) carbonate (siderite) 3.37mg, Manganese (II) oxide 2.13mg, Zinc oxide 10.56mg, Potassium iodide 0.42mg, Vitamin A 720 IU.

Feeding guide: For an average 3.5kg cat we suggest feeding 2½ to 3 cartons per day in at least 2 meals. Fresh drinking water should be available.



Catit Cuisine
Chicken Mousse
with Ham
90g #42141

UPC 0-22517-42141-3
SRT 12 (Configuration of 2x6)



0 22517 42141 3



catit.
CATIT.COM

catit.[®]
CATIT.COM