

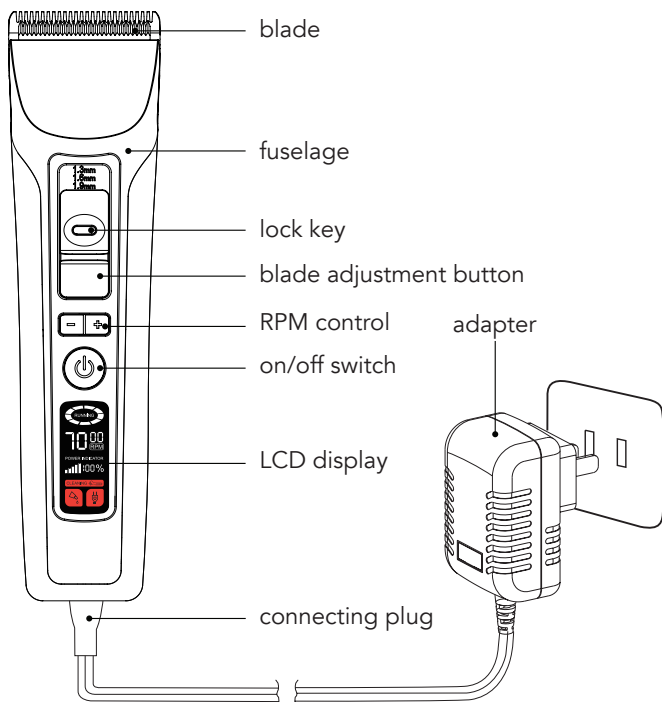
IMPORTANT SAFETY INFORMATION

For your own protection from injuries and electric shocks, the following information must be observed when using electrical equipment:

- Read all the instructions before using the appliance!
- Only use animal clippers to cut animal hair and animal fur.
- Only connect the appliance to an AC mains power supply. Note the rated voltage.
- Never touch electrical equipment that has fallen into water. Disconnect first.
- Never use electrical equipment in the bath or shower.
- Always position or store electrical equipment where it can not fall into water (e.g. washbasin).
- Do not allow electrical equipment to be exposed to water or other liquids!
- Only use the appliance in dry rooms.
- Always disconnect from the mains immediately after use.
- Disconnect from the mains before cleaning the appliance.
- This appliance is not suitable for use by people (including children) with physical, sensory or mental disabilities or who do not have the relevant experience or knowledge of using such appliance, unless under the supervision of or after having received instruction in the use of the appliance by an individual who is responsible for their safety.
- Children should be supervised to ensure they do not play with the appliance.
- Only use the appliance for the proper use as described in the operating instructions. Only use accessories recommended by the manufacturer.
- Never use the appliance if the mains cable is damaged. Furthermore, do not use the appliance if it is not working correctly, if it has been dropped, if it is damaged or if it has fallen into water. In these cases, deliver this item back to your vendor who will take care of a properly repairation.
- Do not hold the appliance by the mains cable to carry it and do not use the cable as a handle.
- Keep the mains cable away from hot surfaces.
- Make sure that the mains cable is not twisted or kinked when stored.
- Never insert or allow any objects to fall into the openings of the appliance.
- Never use the appliance where aerosol (spray) products are being used or where oxygen is released.
- To prevent injury, never use the appliance if the blade set is damaged.
- Initial Operation. Before starting the appliance, always check the lubricating condition of the blade set. Oil the blade set, if and when necessary. Only connect the appliance to the socket while it is switched off. Should the cutting process be interrupted, always switch off the appliance.

1

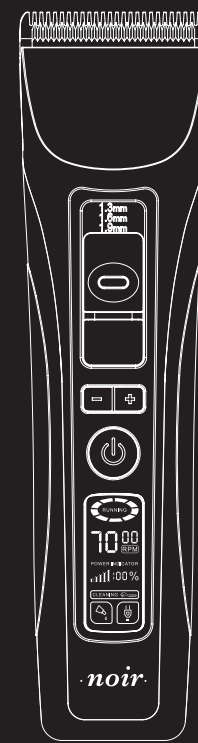
NAME OF PARTS



ACCESSORIES



2



MANUAL - *deluxe* PHT-102



noir
best quality for dogs

ENGLISH

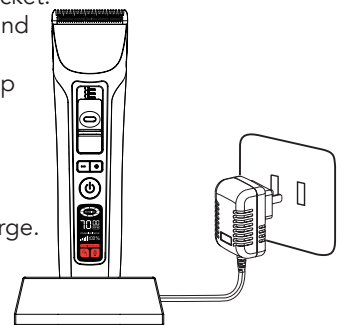
PRODUCT SPECIFICATION

Adapter:	input AC 100V~240V 50/60Hz output DC 5V 1000mA
Rechargeable battery type:	Li-ion (3.7V 2200mAh)
Charge time:	approx. 3 hours
Using time:	approx. 240 mins

CHARGING METHOD

1. Put the connecting plug into the slot of charge stand.
2. Put the adapter plug into the socket.
3. Place the clipper into charge stand after confirming power off ;
4. The charge prompt Icon lights up while charging.

- The clipper can be directly connected to the adapter to charge.
- During use the clipper can connected directly to the adpter.



CHARGING INSTRUCTIONS

1. The best charging temperature: 5°C - 40°C.
2. Battery needs charging for approx. 3 hours, and it will reach the best condition after charging 3 - 4 times.
3. It's normal phenomenon to give out heat while charging & using.
4. Please use original adapter to charge.

3

LCD FUNCTION DESCRIPTION



RPM CONTROL FUNCTION

Real-time display shows the running speed of the product. RPM setting method press "-" or "+" to set RPM. RPM setting range: 5000-7000

INTELLIGENT CONSTANT RPM CONTROL FUNCTION

The product maintains a constant speed. When using the product it can automatically compensate for decline in the speed of cutting resistance.



RUNNING LIGHT

In the starting state, the running light starts to run clockwise, the higher speed, the faster cycle goes.



BATTERY POWER REAL TIME DISPLAY

Real-time display shows the power of the Li-ion rechargeable battery.



CLEANING PROMPT FUNCTION

When the blade is full and filthy, the cleaning icon will start to flash to remind you should unload the blade to clean and oiling.



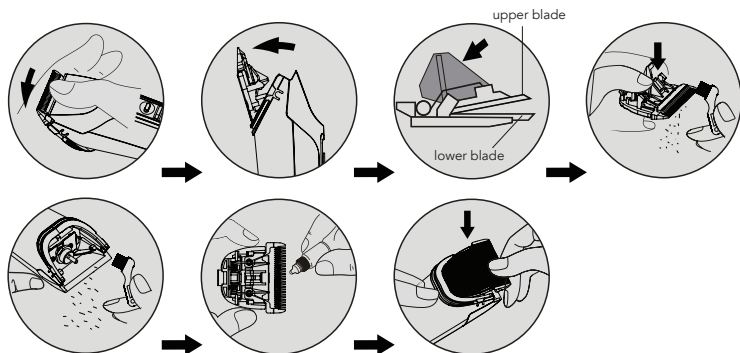
OILING PROMPT FUNCTION

When the blade is full and filthy or the product has accumulated 60 minutes of running, the oiling icon will flash to reminding you to oiling the blade.

- When alarm continues after cleaning and oiling, the blade has been worn, please replace a new blade.

4

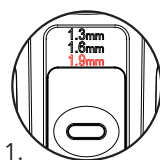
CLEANING



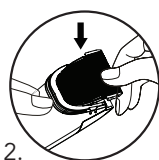
1. Before unloading the blade, make sure you have turn it off and separate the power cable from the clipper.
2. Wash the hair between the upper blade and the lower blade off (please do not take apart the spring of the blade, in case it breaks).
3. Clean the hair from the clipper by using the brush.
4. After cleaning the blade, add some lubricant oil between the upper blade and the lower blade. Otherwise the cutting edge will go dull, make weird noises, give out heat and reduces the effect.
5. Replace the blade (when you hear a click you match it right).

LOADING BLADE

1. Confirm the position of the blade and change the settings to 1.9mm.



1.



2.

6

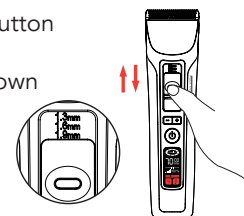
AUTOMATIC CHARGE FUNCTION

When the battery power is less than 5%, the charging icon starts to flash to remind you to charge the clipper.

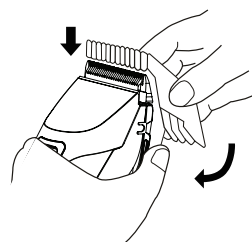
- After starting, if you do not use any key operation within two minutes, the screen will close to save electricity.
- Please charge for 3 hours before using the new product.
- After full-charged, the product will smart off power, starting over-charge protection to prevent over-charge.
- When the product is completely without electricity, the product will start the discharge protection to protect battery life.

BLADE ADJUSTMENT FUNCTION

1. To adjust upward, push the adjustment button directly to the required position.
2. To adjust downward press the lock key down and then push the adjustment button to the required position.



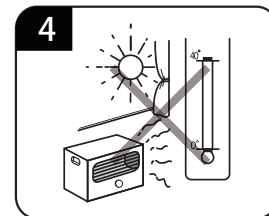
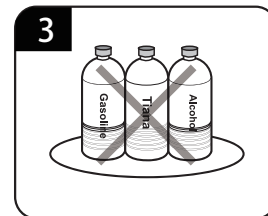
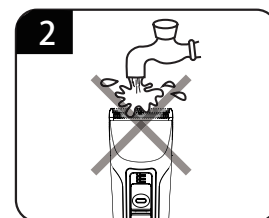
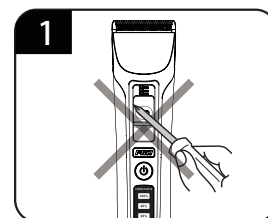
LOADING & UNLOADING COMB



- **LOADING COMB**
Hold the both side, match the slot and push on (avoid losing or dropping).
- **UNLOADING COMB**
Push the locked part of the comb on both sides away (do not press the front or back part, it may hurt the comb).

5

NOTES



1. Do not tear down the clipper randomly. Do not drop the clipper.
2. Do not clean product by water flush and keep the unit away from damp situation.
3. Do not use any corrosives such as alcohol, gasoline etc. to clean the surface.
4. Avoid charging above 40°C or below 0°C.

How to deal with the battery?

Inside is Li-ion battery. Before abandoning please take the battery out and deal with the battery in an environmental-friendly way.

EUROPET BERNINA INTERNATIONAL B.V.
P.O. Box 6 - 5420 AA Gemert-Bakel
The Netherlands
B.T.W. nr. NL 8143.40.015.B01
WEEE-Reg-Nr: DE 18134493

info@ebi.eu - www.ebi.eu

7